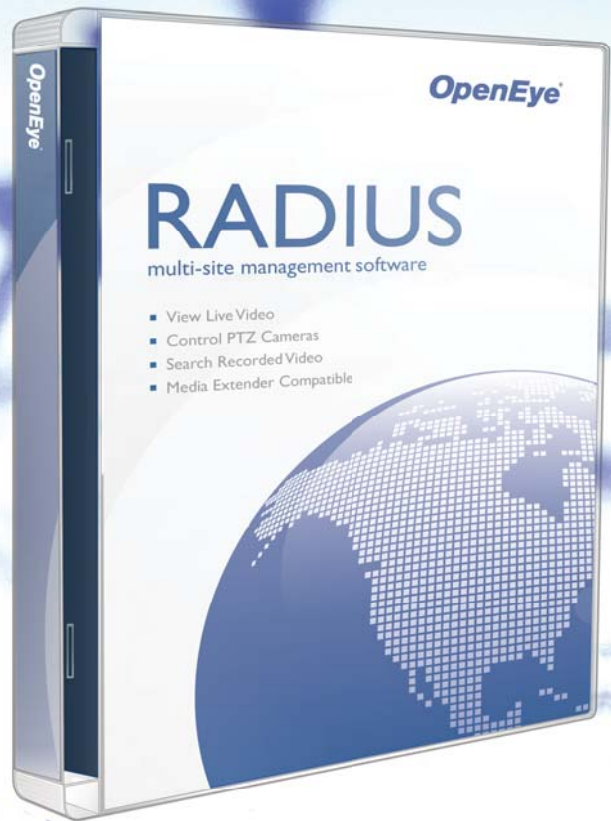


OpenEye®



OpenEye's RADIUS Multi-Site Management Software solution provides a complete control and administration solution for one or more OpenEye analog and network video recorders. Designed for a multiple monitor environment, the Radius software platform enables you to simultaneously monitor alarms, retrieve video clips, and review live video from multiple locations.

HIGHLIGHTS

- » Virtual Matrix Capability
- » Designed For Multi-Monitor Environments
- » Customize Visual Alarms In Map Manager
- » Remotely Monitor Video, Audio And Alarms
- » Access And Export Recorded Video
- » Create Infinite Customized User Accounts

RADIUS

MULTI-SITE SOFTWARE

RADIUS MULTI-SITE SOFTWARE

ADVANCED MULTI-SITE CAPABILITIES

ALARM MONITORING

Keep track of all incoming alarms (including motion, alarm input, and video loss) in a real time.

MULTIPLE USER ACCOUNTS

Create an unlimited number of user accounts and manage them with full control of permissions and user privileges. Restrict access to individual DVRs or individual cameras.

REMOTE BACKUP

Perform remote backup of video from any connected DVR.

POS INTEGRATION AND SUPPORT

Monitor and search POS transactions, creating text filters and alarm events based on product IDs or transaction values.

MULTIPLE MONITOR SUPPORT

Multiple monitors allow you to view live video, search saved video, monitor maps for alarms, and monitor the alarm log simultaneously.

SPECIALIZED SEARCHES

Multiple Search:

Simultaneously search video from multiple DVRs on a single screen.

Preview Search:

Break down a single day of video in to 1 hour, 10 minute, and 1 minute blocks of time.

POS Search:

Search video based on information transmitted during a point of sale transaction.

Index Search:

Search video based on sensor, motion, and instant record events.

Status Search:

Scroll through a display to see which cameras have recorded video and instantly play video from the selected time.

COMPATIBLE WITH ALL DVRs

Connect to all OpenEye DVRs with Radius. OpenEye Video Servers and NVR systems are also compatible.

WINDOWS COMPATIBILITY

With support for Microsoft Windows Vista, XP, and 2000, OpenEye remote solutions can run on most existing PC systems.

REMOTE DVR CONFIGURATION

Change recording schedules, access user permissions, adjust camera settings, and more on all connected DVRs.

CUSTOM MAPS

Add floor plans, site maps and internet maps, such as Google Maps, to create a custom display with dynamic icons indicating the location of each camera, sensor, alarm, and DVR. Link maps together for seamless navigation and enable Radius to alert you of alarms as they happen.

RADIUS SCREENS



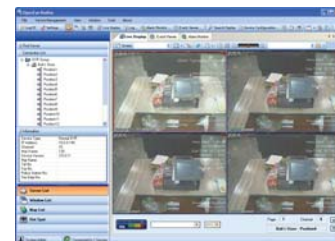
LIVE DISPLAY



CUSTOM MAPS



ADVANCED SEARCHES



POS DATA OVERLAY

NETWORK CAMERA RECORDING CAPABILITIES

Upgrade to RADIUS-NVR and bridge the gap between analog and digital. Now any OpenEye video solution can become a network video recorder quickly and easily. By enabling your system to record up to four channels of network video, RADIUS-NVR allows you to capture video from network cameras and encoders to a your local PC where it can be viewed, searched, and archived. RADIUS-NVR retains all the advanced features of RADIUS with the added benefit of network recording. If you are looking for a way to incorporate network video into your surveillance solution RADIUS-NVR can make it happen.

MODELS

SW-RADIUS

OpenEye RADIUS Multi-Site Management Software (Openeye DVR or NVR Required)

SW-RADIUS-NVR

OpenEye RADIUS with Network Video Recording

HARDWARE REQUIREMENTS

RECOMMENDED

- Pentium IV 3.0 GHz+ (or Equivalent)
- 1GB System Memory
- DirectX 9 or Higher
- Compatible Video Card (ATI Preferable)
- Internet or LAN Connection (DSL, Cable Modem, T1, ISDN, etc.)
- TCP/IP Installed
- Microsoft® Windows® 2000, XP, or Vista Operating System
- Multi-Monitor Support
- 1024 X 768 Display Resolution
- 32 Bit Color Depth

MINIMUM

- Pentium IV 2.0 GHz+ (or Equivalent)
- 512MB System Memory
- DirectX 8 or Higher
- Compatible Video Card (ATI Preferable)
- Internet or LAN Connection (56K, DSL, Cable Modem, T1, ISDN, etc.)
- TCP/IP Installed
- Microsoft® Windows® 2000, XP, or Vista Operating System
- 1024 X 768 Display Resolution
- 16 Bit Color Depth or Better

OpenEye

North America

888.542.1103 Toll Free • 509.232.5261

509.777.6702 Fax • Liberty Lake, WA • www.openeye.net



26106AG

Copyright ©2008 OpenEye, Inc. All Rights Reserved. Information contained in this document is subject to change without prior notice. OpenEye does its best to provide accurate information but cannot be held responsible for typos or mistakes.